

Local and Regional Government Finland

Operations and functions of local
authorities

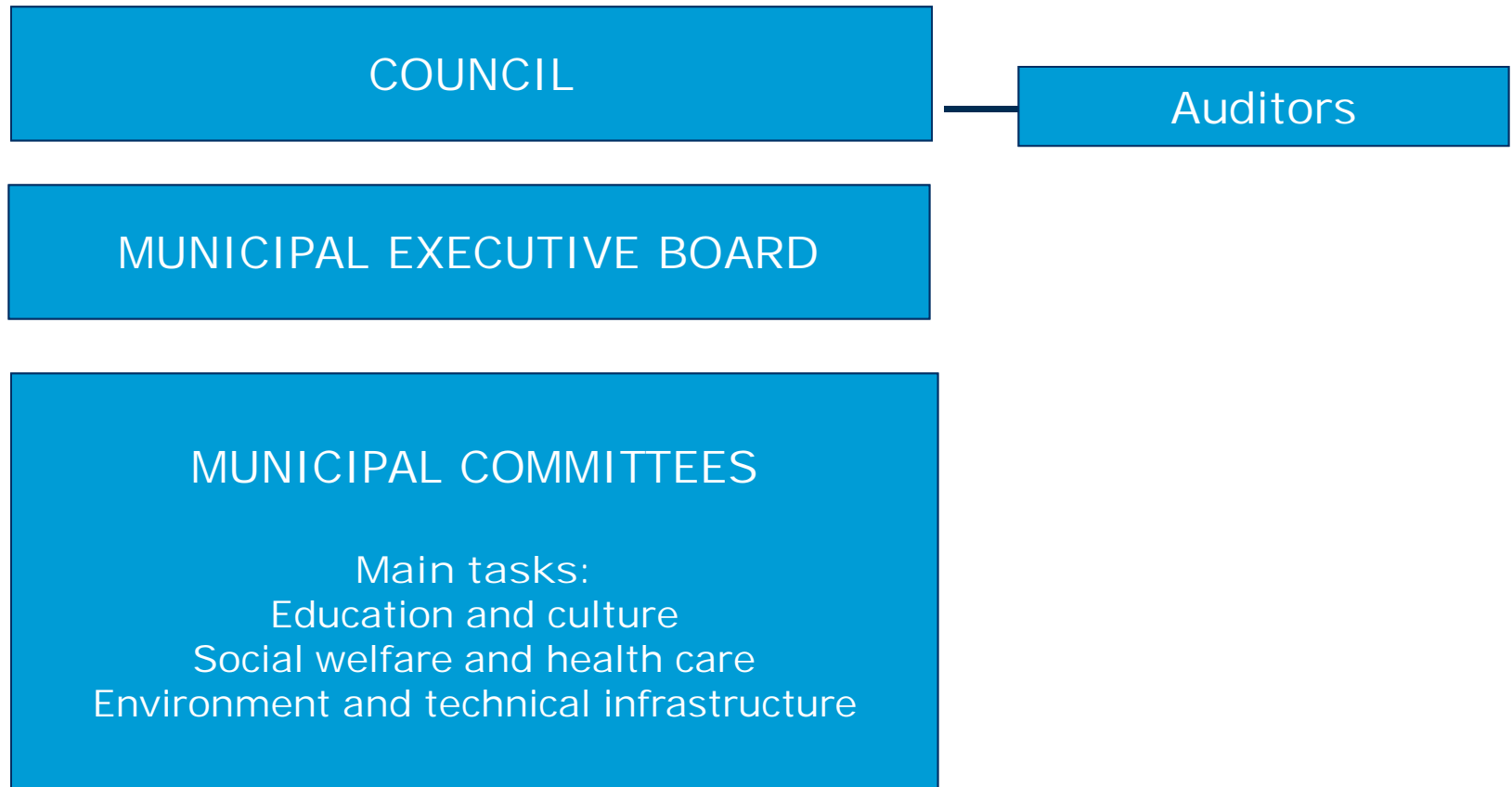
www.localfinland.fi



Finland has 336 local authorities (2011)

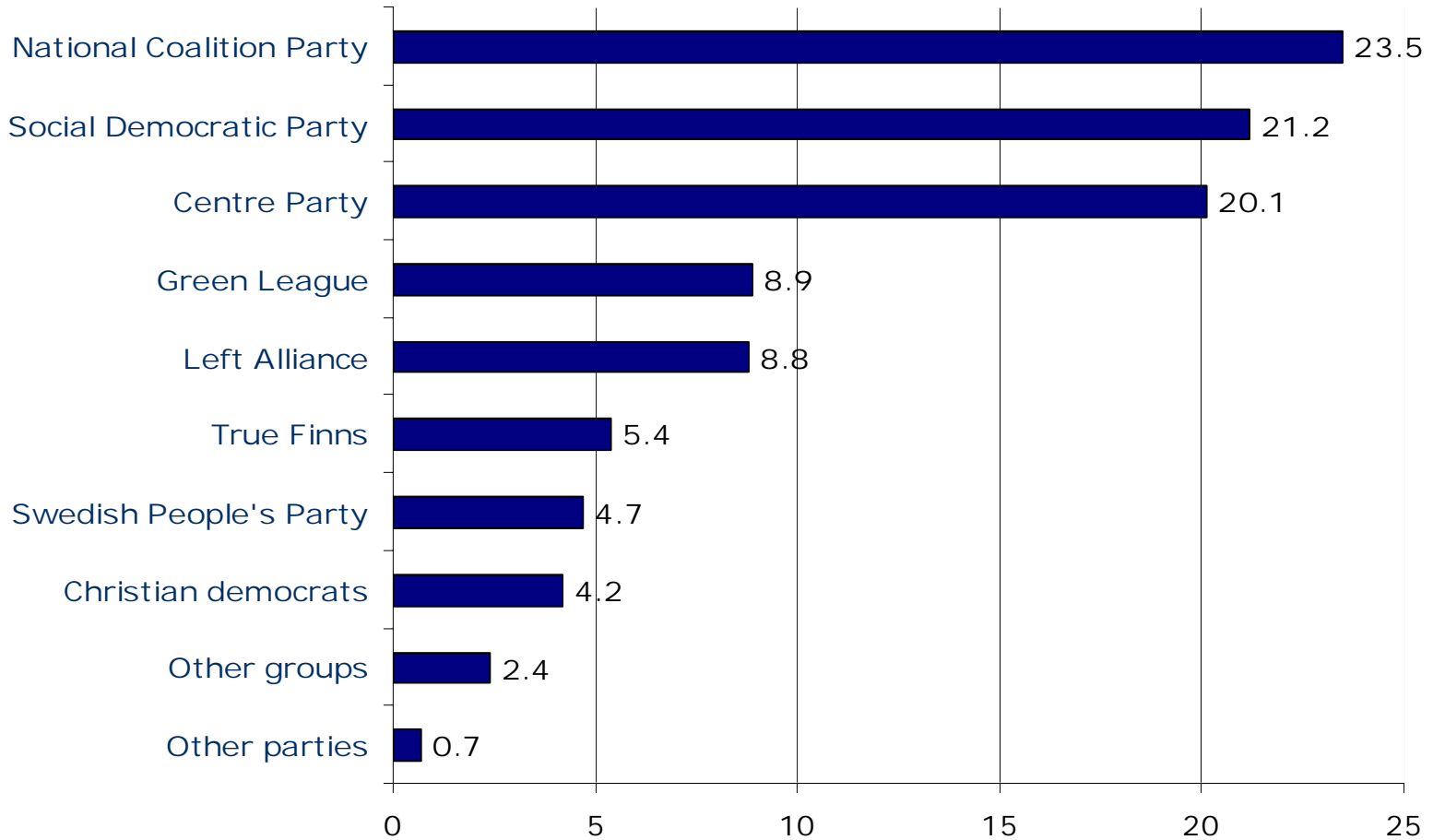
- Local authorities are self-governing units where the highest decision-making authority is vested in local councils elected by residents.
- Local authorities provide citizens with basic services, the most important of which relate to social welfare, health care, education, culture, environment and technical infrastructure.
- The budgets of local and joint municipal authorities are approximately 38.5 billion euros (2010).
- 422 000 employees serve municipal residents.

Local government organisation



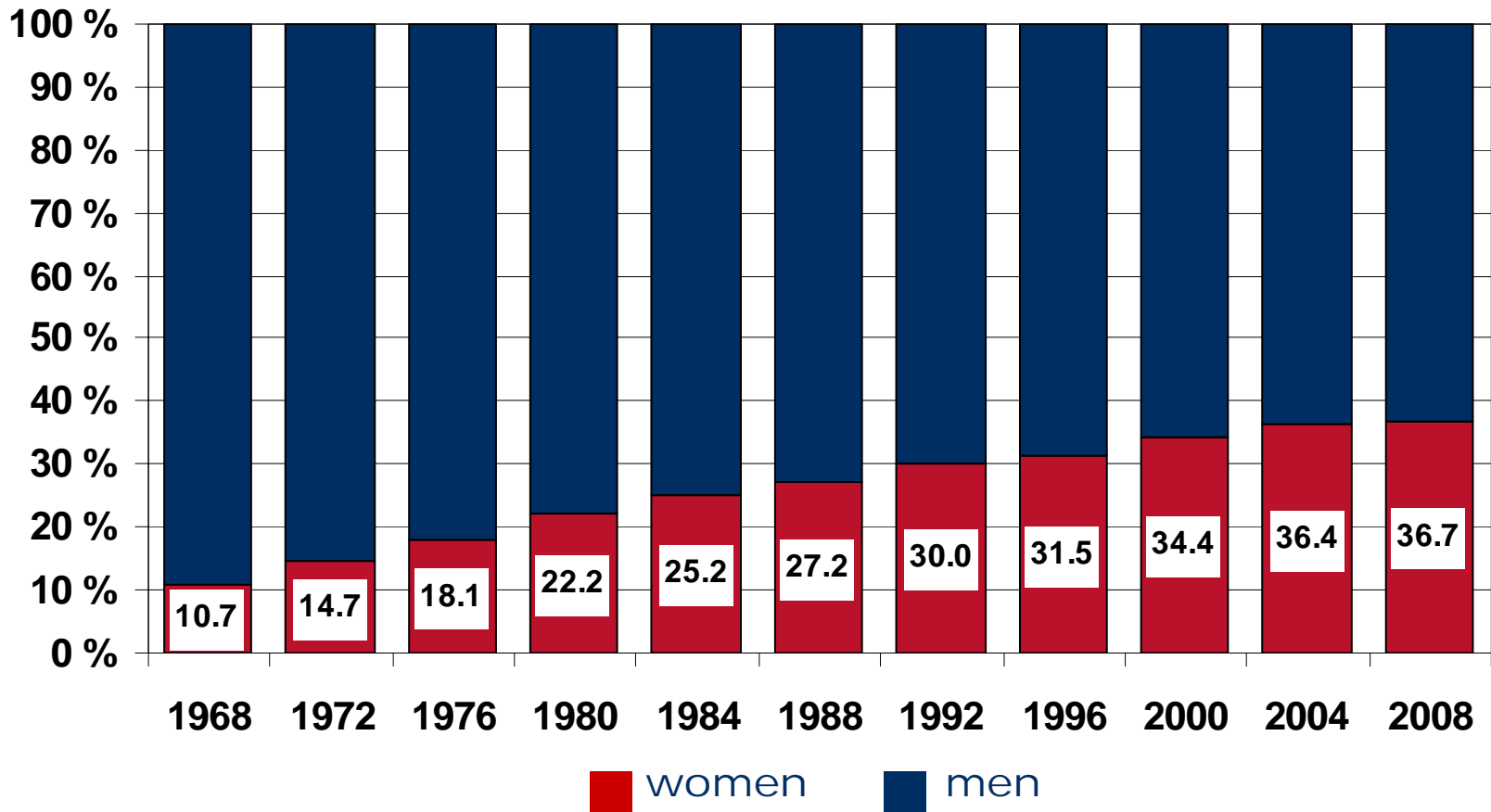
Municipal elections, 2008

Percentage of votes received by each party



Election turnout 61.3%

Percentage of women in municipal councils



Examples of differences between local authorities

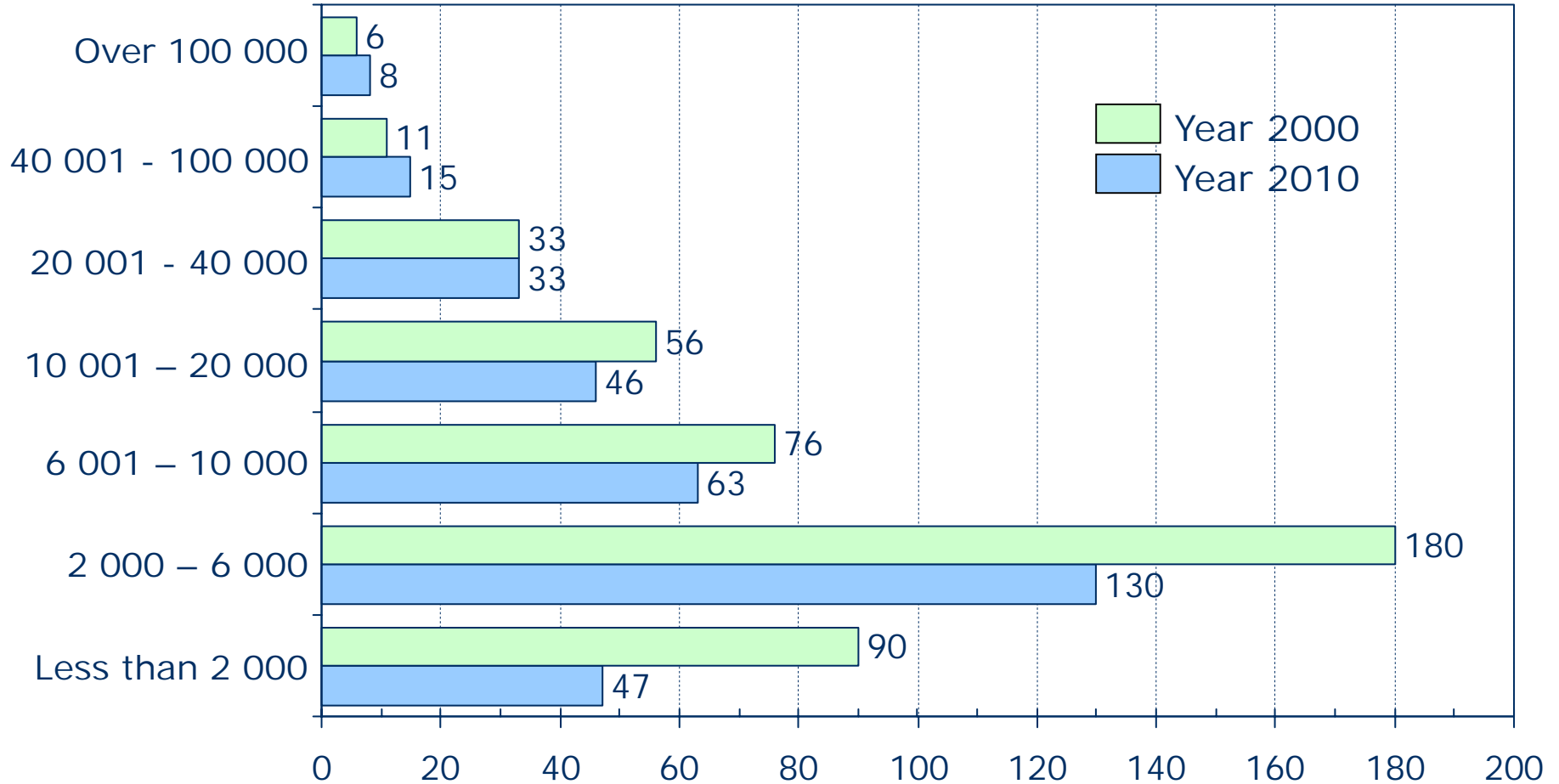
		Average	Smallest	Largest
Population 31 Dec 2009		5 351 427 (total)	125	583 350
Population density	inh./km ²	17.6	0.2	2 730
Area (excl. waters) km ²		303 907 (total)	6.0	15 052
Economic structure 2007				
Agriculture and forestry	%	3.9	0.2	37.2
Manufacturing	%	25.1	6.8	46.1
Services	%	69.9	40.9	86.2
Age structure 2009				
aged 0–14	%	16.6	9.5	34.9
aged 15–64	%	66.4	52.8	71.9
aged 65 and over	%	17.0	7.7	36.7
Local tax rate 2010, % of taxable income		18.98	16.25	21.00

No. of local authorities by population size in 2000 and 2010

A total of 452 local authorities in 2000

A total of 342 local authorities in 2010

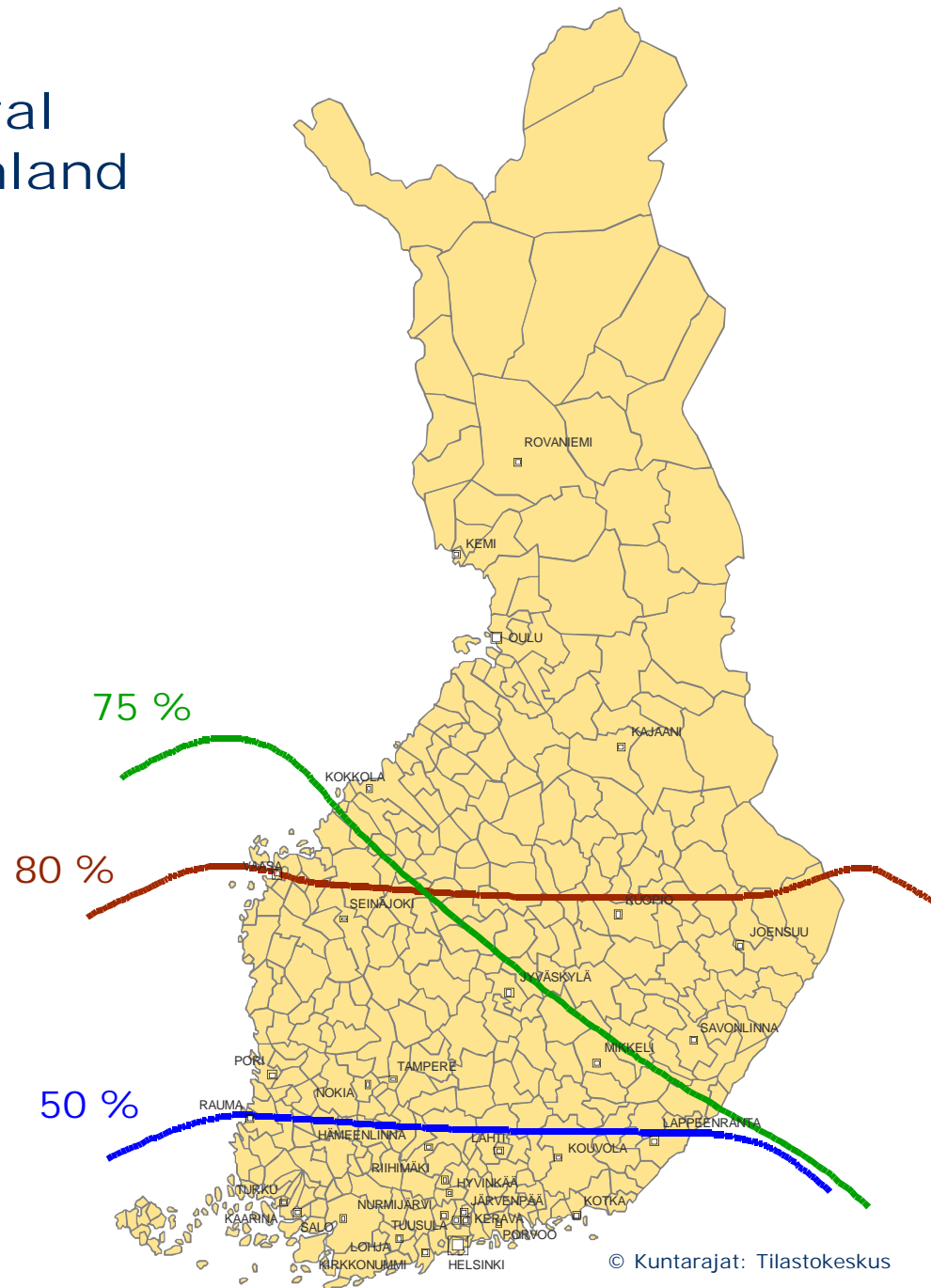
Population



The arithmetic mean size of local authorities was 11,640 in 2000 and 15,650 in 2010

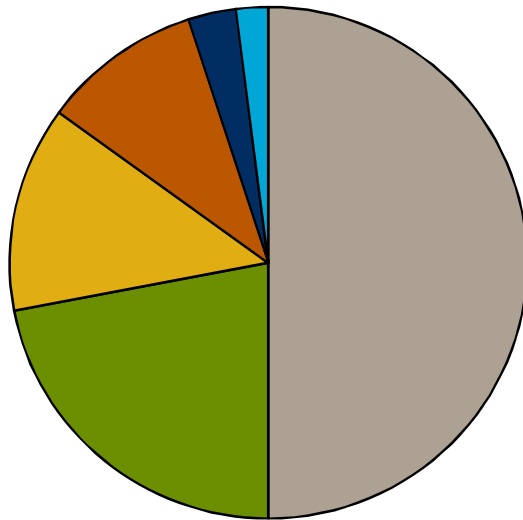
The median size of local authorities was 4,720 in 2000 and 5,750 in 2010

Shares of the total population of Finland (2008)



© Kuntarajat: Tilastokeskus

Total municipal sector expenditure

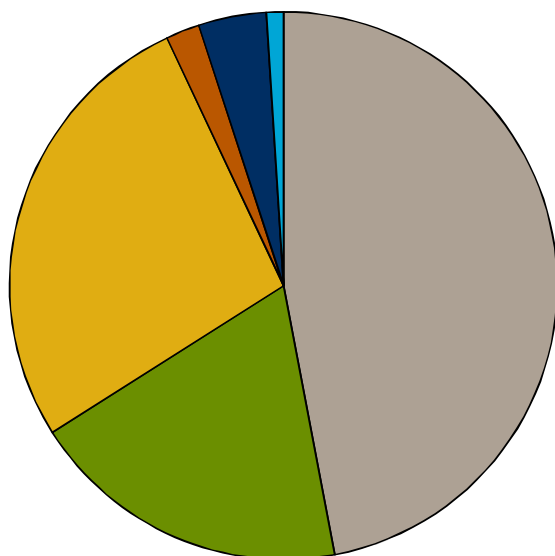


Estimate for 2011
(external expenditure)

- Social welfare and health care
50%, 20.3 billion €
- Education and culture
22%, 8.9 billion €
- Other operating expenditure
14%, 5.5 billion €
- Investment expenditure
9%, 3.8 billion €
- Debt servicing
4%, 1.6 billion €
- Other expenditure
1%, 0.3 billion €

Total 40.4 billion euros

Total municipal sector revenue



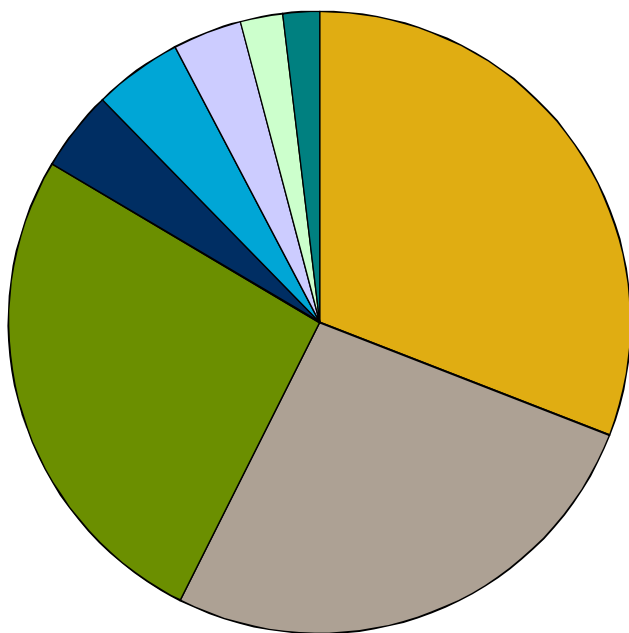
Estimate for 2011
(external revenue)

- Tax revenue
46%, 18.6 billion €
- Central government transfers for operational
finances, 19%, 7.8 billion €
- Operating revenue
26%, 10.7 billion €
- Investment
3%, 0.8 billion €
- Borrowing
5%, 1.9 billion €
- Other revenue
2%, 0.8 billion €

Total 40.6 billion euros

Municipal employees in different branches (2010)

Employees in total 422 000

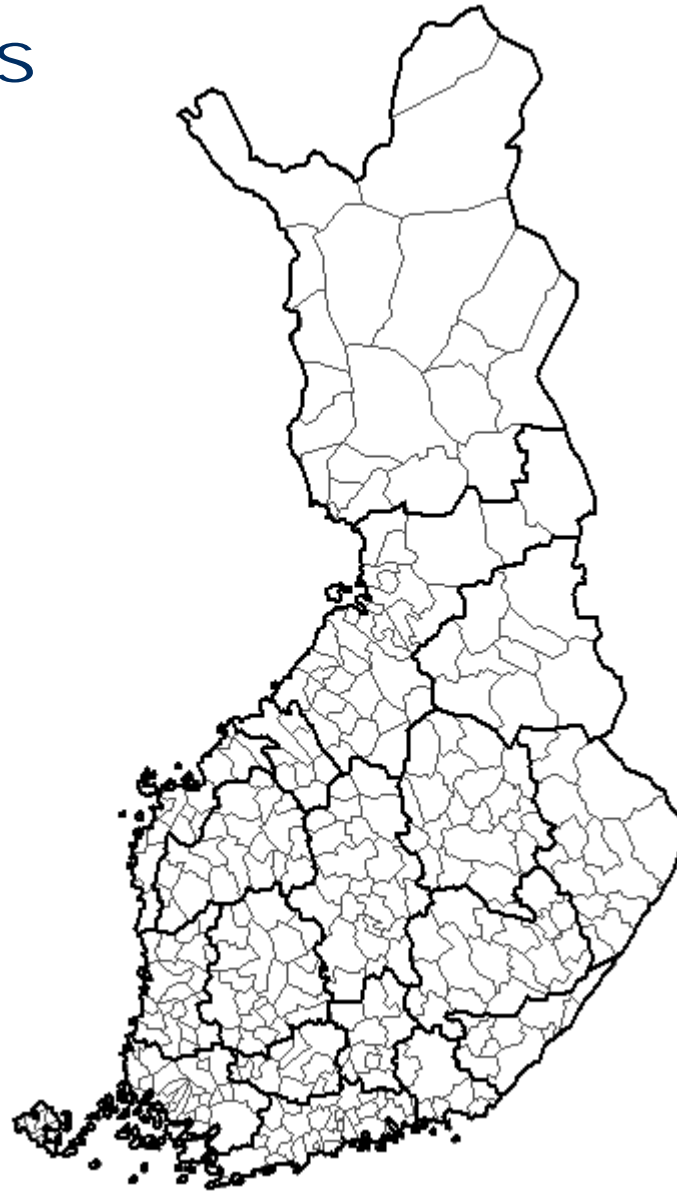


- Health care
30.5%
- Social services
27.0%
- Education and culture
26.0%
- Land-use planning and public works
4.0%
- Municipal enterprises
4.8%
- General administration
3.6%
- Real estate
2.2%
- Public order and safety
1.9%

Finland's regions and municipalities

18 regions and Åland

336 municipalities





Thank you!

More information at www.localfinland.fi

